



HOUSE NUMBER

Where is it located, how is it relating to its immediate surroundings?

Its located on the front of my house, so it is outside.

What aspects make it specifically an interface to you?

Because it gives information to the user.

Who is the user of the interface?

Everybody that wants to find your house (postman, family, visitors etc.).

Which system or systems are connected by the interface?

The user is connected to the house number because it gives information. The house number is connected to the house and the name of the street.

How does the interface affect the user?

People know if they're at the right house. Also is the owner of the house registered at this number.

How can the user interact with the interface?

By reading the house number.

What are the material properties of the interface?

Metal.



ASHTRAY

Where is it located, how is it relating to its immediate surroundings?

It is located in my yard, but it can be located everywhere you need it.

What aspects make it specifically an interface to you?

With this interface the user can put out his cigarette, and it can hold the burning cigarette.

Who is the user of the interface?

Everybody that smokes in my yard.

Which system or systems are connected by the interface?

The user is connected to the cigarette and the cigarette is connected to the ashtray.

How does the interface affect the user?

The user won't have to throw his cigarette on the ground or accidentally put the trashcan on fire. It can also be a sign that it is allowed to smoke somewhere.

How can the user interact with the interface?

By pressing the cigarette into the ashtray.

What are the material properties of the interface?

Pottery.



SOAP

Where is it located, how is it relating to its immediate surroundings?

This soap is located at the sink. Soap is usually located right next to a water source.

What aspects make it specifically an interface to you?

Soap is the interface between a person dirty hands and clean hands. Soap cleans.

Who is the user of the interface?

Someone who uses the soap. For themselves or for things that need to be cleaned.

Which 'system' or 'systems' are connected by the interface?

System of soap, soap cleans and someone/something that needs cleaning.

How does the interface affect the user?

The user gets cleaner after/while using the interface.

How can the user interact with the interface?

The user gets the soap and rubs it on the area that needs to be cleaned.

What are the material properties of the interface?

Soap and water.



LICENSE PLATE

Where is it located, how is it relating to its immediate surroundings?

It is located on my car.

What aspects make it specifically an interface to you?

Because of this interface the person that owns the car is linked to the car.

Who is the user of the interface?

Everybody that owns a car, police that want to find out from who the car is.

Which system or systems are connected by the interface?

The license plate is connected to the owner of the car and to the car itself.

How does the interface affect the user?

The user can recognize his car and also does the police and the car mechanic.

How can the user interact with the interface?

By reading it.

What are the material properties of the interface?

Metal.



DUSTPAN AND BRUSH

Where is it located, how is it relating to its immediate surroundings?

Is located in my barn.

What aspects make it specifically an interface to you?

Because of this you can sweep up things that you swept together with a broom.

Who is the user of the interface?

Everybody that wants to clear the ground of his garden.

Which system or systems are connected by the interface?

The user is connected to the dustpan and brush and they are connected to the ground with the things you want to sweep up.

How does the interface affect the user?

The user will get a clear ground in his garden when he uses it.

How can the user interact with the interface?

By picking up the dustpan and brush and sweep things with the brush onto the dustpan.

What are the material properties of the interface?

Metal, wood, plastic.



ROAD ARROW

Where is it located, how is it relating to its immediate surroundings?

A road near home.

What aspects make it specifically an interface to you?

The arrow shows the driver where to go. It indicates a driving directions and makes sure traffic knows which way to drive.

Who is the user of the interface?

A person driving a vehicle on the road.

Which 'system' or 'systems' are connected by the interface?

A driver and the system of an arrow on the road. Knowing what the arrow indicates and what it means.

How does the interface affect the user?

The user knows which way to drive, experiences help or clearness.

How can the user interact with the interface?

The user reads the sign and thinks. Knows what to do.

What are the material properties of the interface?

Paint.



OLD NOKIA

Where is it located, how is it relating to its immediate surroundings?

Mostly in your pocket back in the 90s/00s.

What aspects make it specifically an interface to you?

Because the interface gives you the opportunity to call and text other people.

Who is the user of the interface?

Almost every human that wants to be connected to others.

Which system or systems are connected by the interface?

The user is connected to the mobile phone and the mobile phone is connected to a transmission tower and because of that the user is connected to other mobile phones that are connected to other people.

How does the interface affect the user?

The user can keep in touch with people in a quick way. The user can talk to someone in only a couple second even when this person is far away.

How can the user interact with the interface?

Because of the buttons and the digital screen.

What are the material properties of the interface?

Plastic and metals.



BLOUSE BUTTONS

Where is it located, how is it relating to its immediate surroundings?

These buttons are on a blouse.

What aspects make it specifically an interface to you?

Buttons open and close a blouse. When a person touches the buttons the blouse gets opened or closed.

Who is the user of the interface?

The user of this interface is the person getting dressed or undressed.

Which 'system' or 'systems' are connected by the interface?

The connecting systems are the system of buttons that close or open a blouse with the person who is getting dressed.

How does the interface affect the user?

The user has to think about how to button up and experiences an open or closed blouse.

How can the user interact with the interface?

The user uses the buttons.

What are the material properties of the interface?

Plastic.



A TAP

Where is it located, how is it relating to its immediate surroundings?

It is located in the toilet room.

What aspects make it specifically an interface to you?

Because you can wash your hands with it.

Who is the user of the interface?

Everybody that need to wash their hands after going to the toilet

Which system or systems are connected by the interface?

The hands of the user are connected with this interface and the interface is connected to the sink.

How does the interface affect the user?

The user gets clean hands when using the interface.

How can the user interact with the interface?

By turning the tap on and wash their hands.

What are the material properties of the interface?

Metal.



GLASSES

Where is it located, how is it relating to its immediate surroundings?

It located on the not in front of the eyes.

What aspects make it specifically an interface to you?

With this interface the user is able to see better.

Who is the user of the interface?

Everybody with bad eyes.

Which system or systems are connected by the interface?

The eyes of the user are connected to the interface and the interface is connected to everything that the user is seeing.

How does the interface affect the user?

The user can see and read things better.

How can the user interact with the interface?

By putting the glasses on and look trough them.

What are the material properties of the interface?

Metal, glass.



LIGHTER (name of the interface)

Where is it located, how is it relating to its immediate surroundings?

This sign is located on the route to my family. It is located at a crossroad.

What aspects make it specifically an interface to you?

The fact that the extra large sign also is extra large. The sign communicates a store. But within the sign the letters communicate how big the store is. Because of the huge letters.

Who is the user of the interface?

The user is the person who drives by this sign and reads it.

Which 'system' or 'systems' are connected by the interface?

Fonts, reading and sizing. Also the system of knowing what extra large means, and understanding the big letters as extra large.

How does the interface affect the user?

The user is affected in a way that you read and see the xl. Which then automatically shows the big size.

How can the user interact with the interface?

The user reads it, and thinks about it. What Can also happen is that the user wants to do something with the information. So for example go to the actual store after seeing this.

What are the material properties of the interface?

Big plastic letters.



A CAP OF TURPENTINE BOTTLE

Where is it located, how is it relating to its immediate surroundings?

Its located in the kitchen

What aspects make it specifically an interface to you?

The interface tells you how to open the cap.

Who is the user of the interface?

Every adult that needs to use this product.

Which system or systems are connected by the interface?

The adult user is connected by this interface and the place or thing that needs to be cleaned with it.

How does the interface affect the user?

The user knows how to open the cap by seeing this interface.

How can the user interact with the interface?

By following the illustration on the cap.

What are the material properties of the interface?

Plastic.



PS4 CONTROLLER

Where is it located, how is it relating to its immediate surroundings?

In my bedroom next to my playstation.

What aspects make it specifically an interface to you?

Because of this interface you can use the playstation and the shape is developed for hands.

Who is the user of the interface?

Everybody that wants to use a playstation.

Which system or systems are connected by the interface?

The user is connected to this interface and the interface is connected to the playstation.

How does the interface affect the user?

The user is able to control the playstation from a distance.

How can the user interact with the interface?

By turning on the playstation and press the buttons on the interface to control the playstation.

What are the material properties of the interface?

Hard plastic.



FLY KILLER

Where is it located, how is it relating to its immediate surroundings?

It is located in my living room, but it can be located everywhere.

What aspects make it specifically an interface to you?

With this interface the user can get rid of flies and bees.

Who is the user of the interface?

Everybody that is annoyed by flying insects.

Which system or systems are connected by the interface?

The user is connected to the interface and the interface is connected to the flying insect. The interface is connected to a battery.

How does the interface affect the user?

The user is able to kill flying insects on an easy way.

How can the user interact with the interface?

By pressing the the button on the fly killer that's causes an electrical shock.

What are the material properties of the interface?

Plastic, metal.



LAMP

Where is it located, how is it relating to its immediate surroundings?

This lamp is located in my brothers room.

What aspects make it specifically an interface to you?

When I touch the stick that is pointing out, the lamp lights up. Something I do, when the stick reacts, the lamp reacts and so the lamp turns on.

Who is the user of the interface?

The user is the person who wants light.

Which 'system' or 'systems' are connected by the interface?

The systems that are connected is the stick switch with the lamp.

How does the interface affect the user?

The user receives light.

How can the user interact with the interface?

The user touches the lamp. After it experiences light.

What are the material properties of the interface?

Metal, glass, etc.



TAPE HOLDER

Where is it located, how is it relating to its immediate surroundings?

It is located in my working room.

What aspects make it specifically an interface to you?

The user is able to tear off tape on an easy way.

Who is the user of the interface?

Everybody that needs tape.

Which system or systems are connected by the interface?

The user is connected to the tape holder and the tape holder is connected to the tape.

How does the interface affect the user?

The user can tear of tape without looking for the end of the tape roll.

How can the user interact with the interface?

By grabbing the tape and tear it off.

What are the material properties of the interface?

Hard plastic.



WATERPAS

Where is it located, how is it relating to its immediate surroundings?

It is located in my barn.

What aspects make it specifically an interface to you?

Because of this interface you can make sure that something is straight.

Who is the user of the interface?

Everybody that wants to know if something is straight.

Which system or systems are connected by the interface?

The user is connected to the interface and the interface is connected to the thing you want to measure.

How does the interface affect the user?

The user knows if something is straight because of this interface.

How can the user interact with the interface?

By laying this interface on an object.

What are the material properties of the interface?

Metal, plastic, liquid



FART SIGN

Where is it located, how is it relating to its immediate surroundings?

This sign is located in my brothers room. It relates to my immediate surroundings because it is located in my house.

What aspects make it specifically an interface to you?

This sign is an interface to me because it communicates a sort of behavior to the reader. It tells you no farting is allowed. The 'clouds' represent a fart. The figure we recognize as a human. Most likely more as a man than an female. The combination of the figure with the fart clouds and the red crossed line through them makes is clear farting is not allowed.

Who is the user of the interface?

The user of this interface is the reader. The person who sees the sign.

Which 'system' or 'systems' are connected by the interface?

The system of reading and understanding combined with the system of signs. The red and the stripes are known to be a sign of a ban. The system of combining a cloud at the bottom of the figure representing farting.

How does the interface affect the user?

It affects the user in a way that the user knows to not fart. It experiences a ban to farting. It could also be something funny to the user.

How can the user interact with the interface?

The user reads the interface. The user is told not to fart.

What are the material properties of the interface?

The material of this interface is metal.



DUMBBELL

Where is it located, how is it relating to its immediate surroundings?

It is located in my living room or in any room you want to fitness.

What aspects make it specifically an interface to you?

Because of this interface you can train your muscles and stay fit.

Who is the user of the interface?

Everybody that's wants to stay fit or grow muscles.

Which system or systems are connected by the interface?

The user is connected to the interface and the interface is connected to the body part you want to train.

How does the interface affect the user?

The user wil stay fit and is able to grow muscles. The user can set the weight to his own preference.

How can the user interact with the interface?

By adjusting the correct weight and using the interface in the way the desired body part is trained

What are the material properties of the interface?

Metal.



PATTERNED BRICKS

Where is it located, how is it relating to its immediate surroundings?

These bricks are located at a random parking lot.

What aspects make it specifically an interface to you?

The bricks are divided in a pattern. The pattern initiates a parking spot. They are put in such a way that the user understands the purpose of the pattern.

Who is the user of the interface?

The person parking in that parking spot.

Which 'system' or 'systems' are connected by the interface?

The system of patterned bricks and the car with the person driving it.

How does the interface affect the user?

It affects the user in a way that the user knows and sees where to park and where the parking spot is located.

How can the user interact with the interface?

The user sees the bricks, then knows where to park. The user acts on them.

What are the material properties of the interface?

Brick.



SIDEWALK

Where is it located, how is it relating to its immediate surroundings?

This is a random sidewalk somewhere located close to my house.

What aspects make it specifically an interface to you?

The sidewalk indicates where people can walk and where other vehicles drive. It divides the street into divisions.

Who is the user of the interface?

The user is any person who walks on there.

Which 'system' or 'systems' are connected by the interface?

The system of the positioning of certain bricks and the street with the people using the street.

How does the interface affect the user?

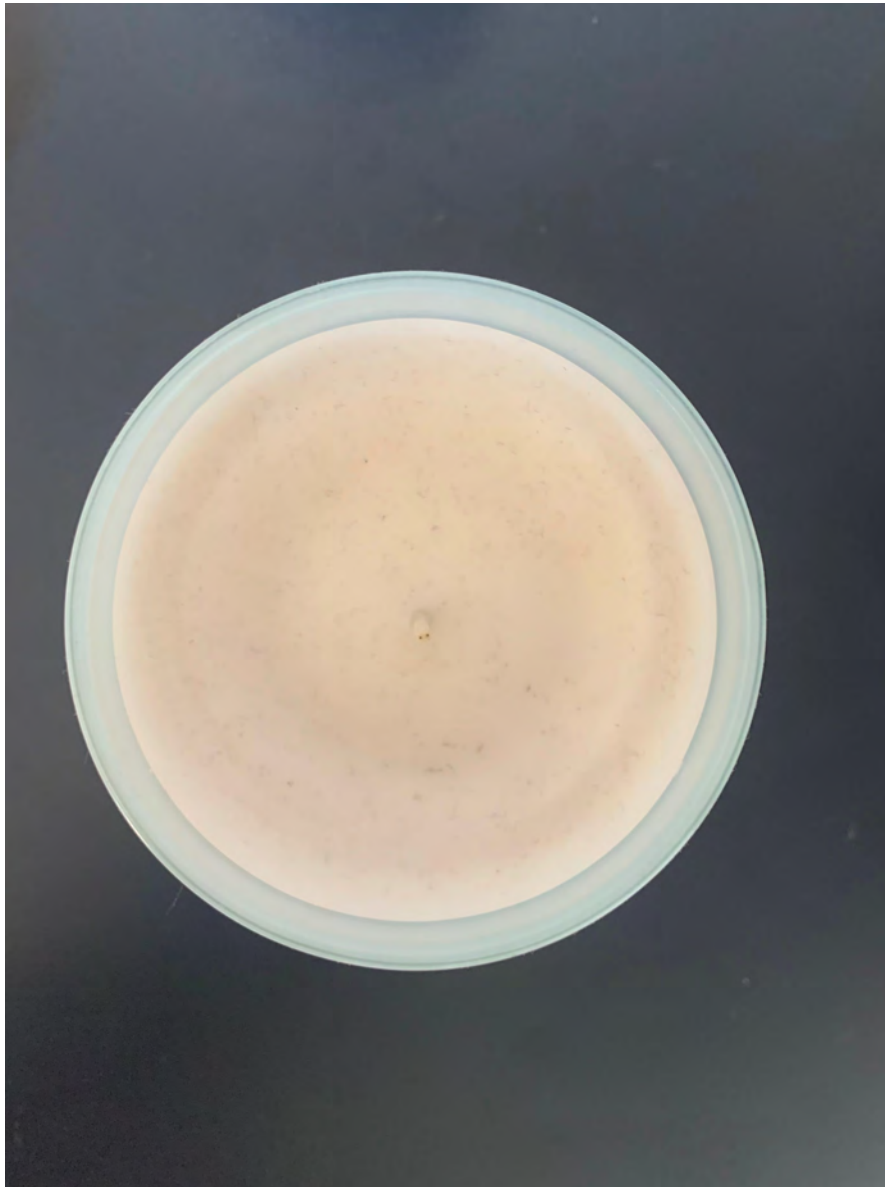
The user knows where to walk and not to drive. The user is given boundaries.

How can the user interact with the interface?

The user can walk on the sidewalk.

What are the material properties of the interface?

Brick.



A CANDLE

Where is it located, how is it relating to its immediate surroundings?

This scented candle is located in my room. This is a new candle so I haven't used it yet.

What aspects make it specifically an interface to you?

A scented candle is an interface because it provides light and scent once lit.

Who is the user of the interface?

The user is the person who turns the candle on. Anyone who wants, light, warmth, scent or just a candle.

Which 'system' or 'systems' are connected by the interface?

The systems are the candle with the scent connected to light and warmth that is wanted by a person.

How does the interface affect the user?

It affects the user in a way that it provides the user with something after being lit. It gives something back.

How can the user interact with the interface?

The user can light the candle, smell it, feel its warmth.

What are the material properties of the interface?

Wax.



FLIP FLOPS

Where is it located, how is it relating to its immediate surroundings?

These flip flops are my everyday shoes. I walk around the house in them everyday.

What aspects make it specifically an interface to you?

This interface is a bit less specific or clear maybe. But the fact that we as a society here know that this form of material is meant to put your feet in and walk in it for me is an interface. It is the interface between me, my feet and walking comfortable. The flip flops make it possible for me to walk comfortable.

Who is the user of the interface?

The user is the persons who puts their feet in these shoes.

Which 'system' or 'systems' are connected by the interface?

The system of knowledge of society with the shoes. Or just feet connected with shoes.

How does the interface affect the user?

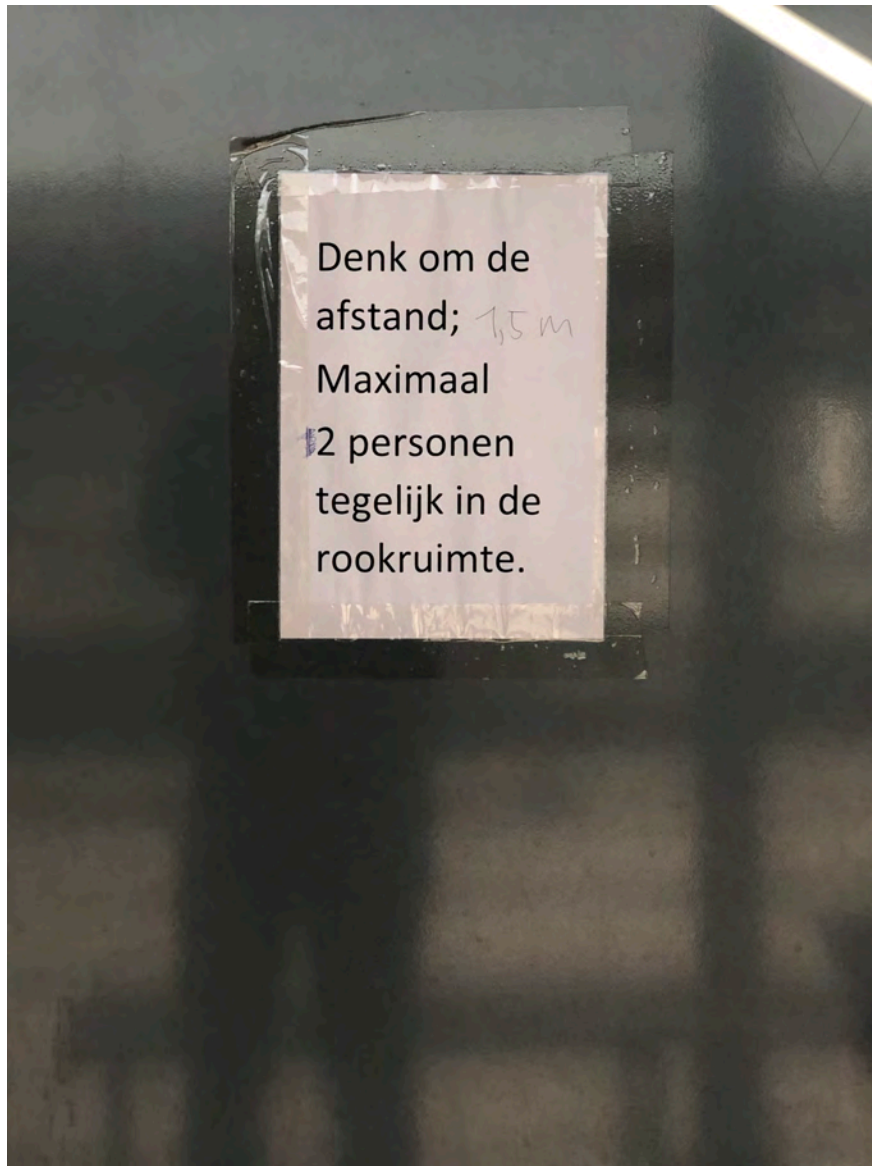
The interface makes sure the user can walk with shoes on. It makes walking more comfortable.

How can the user interact with the interface?

The user wears the interface. The user experiences comfort.

What are the material properties of the interface?

plastic/rubber.



SIGN IN SMOKING AREA

Where is it located, how is it relating to its immediate surroundings?

It is located in the smoking area of my work.

What aspects make it specifically an interface to you?

Because it gives the smokers information on how to act.

Who is the user of the interface?

All the smokers from my work.

Which system or systems are connected by the interface?

The behavior of the smokers is connected by the interface. The interface is connected by the corona virus because that is the reason that it is there.

How does the interface affect the user?

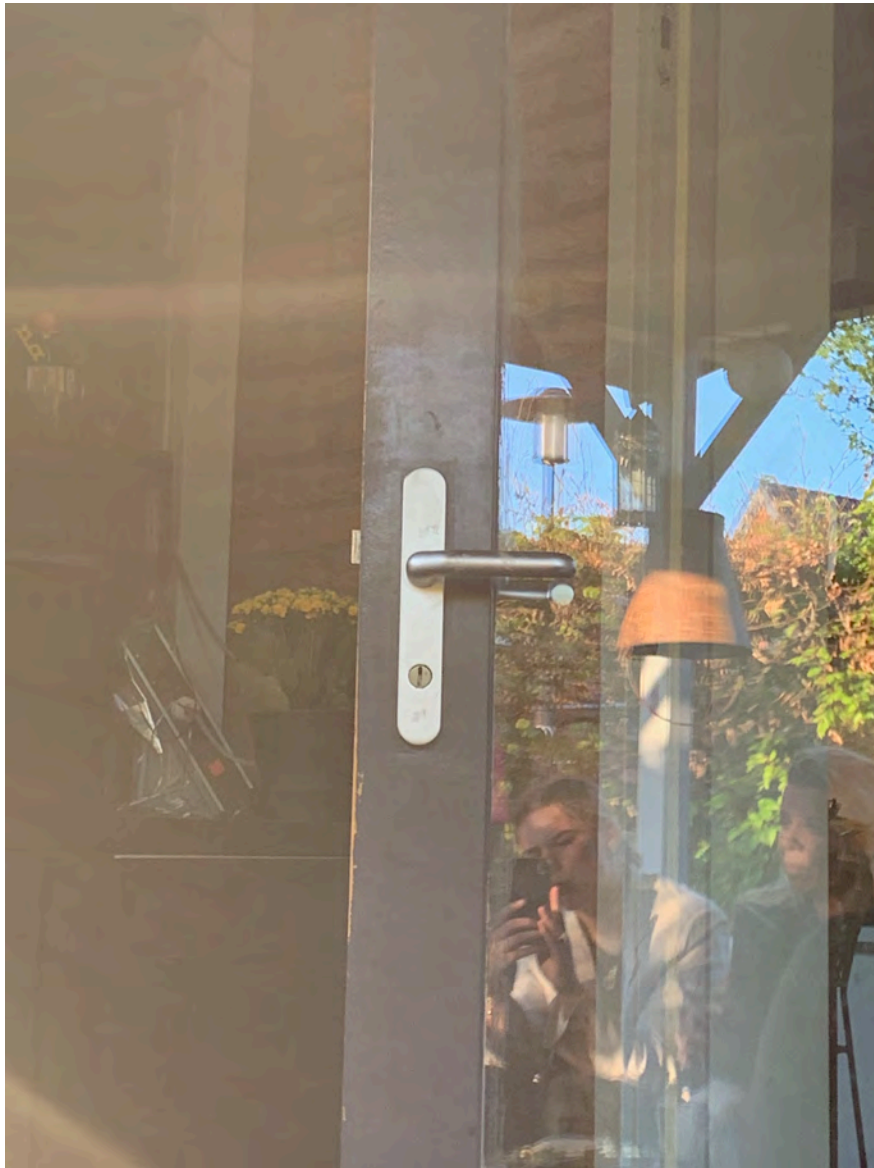
The users have to adjust their behavior to this interface.

How can the user interact with the interface?

By reading it and adjust to it.

What are the material properties of the interface?

Paper.



DOOR HANDLE

Where is it located, how is it relating to its immediate surroundings?

This door handle is located in my friends house. But a door handle is always located in your immediate surrounding. Door handles are used in everyday life.

What aspects make it specifically an interface to you?

A door handle is the interface between you a closed door and an open door. A person moves the door handle which then opens the door or closes it.

Who is the user of the interface?

The user is the person who wants to open or close a door.

Which 'system' or 'systems' are connected by the interface?

The systems that are connected are the person that knows how to move a door handle and the system of the usage of the door handle itself.

How does the interface affect the user?

The user experiences a door opening or closing due to their actions.

How can the user interact with the interface?

The user touches the interface which causes action.

What are the material properties of the interface?

Metal or wood. In a door or window.



SUPERMARKET ARROW

Where is it located, how is it relating to its immediate surroundings?

This interface is located in my local supermarket.

What aspects make it specifically an interface to you?

This is an interface because an arrow shows/explains something. An arrow communicates to look or go in a certain way.

Who is the user of the interface?

The user of this interface is the person in a supermarket who sees the arrow and maybe reacts to it. Actually looks in the way the arrow is placed.

Which 'system' or 'systems' are connected by the interface?

The system of an arrow and people knowing the sign 'arrow'. We in this society know the meaning of an arrow, which suggest a system.

How does the interface affect the user?

The user may (most likely) respond to seeing the arrow. The user will look that way.

How can the user interact with the interface?

The user sees the interface and 'reads' it. The user can respond.

What are the material properties of the interface?

In this case the arrow is a sticker.



A GLASS

Where is it located, how is it relating to its immediate surroundings?

A glass is something I use everyday to drink out of. Drinking is one of the most important things for a human being.

What aspects make it specifically an interface to you?

A glass is an interface between drinking and the person. A person holds the glass containing any type of liquid.

Who is the user of the interface?

Any person who wants to drink something.

Which 'system' or 'systems' are connected by the interface?

The system of a glass holding liquid and a human needing liquid are connected.

How does the interface affect the user?

The glass itself doesn't necessarily affect the user but what is in it does. Holding the glass, bringing it towards you is an experience in a way.

How can the user interact with the interface?

The user can hold the glass.

What are the material properties of the interface?

Glass and substance in it.



CAR DESKTOP DEVICE

Where is it located, how is it relating to its immediate surroundings?

This device is in my dad's car.

What aspects make it specifically an interface to you?

This device interacts with the persons in the car. It shows the road, you can type on it, it provides all kinds of possibilities to change and interact with.

Who is the user of the interface?

The user of the interface is the person(s) in the car.

Which 'system' or 'systems' are connected by the interface?

The car system, so heat, music, map and road connected to the people that are in the car.

How does the interface affect the user?

It affects the user in a way that it can change the surroundings in the car if the person changes settings on the device.

How can the user interact with the interface?

The user can touch the screen and type or press.

What are the material properties of the interface?

Screen.



FOOTBALL

Where is it located, how is it relating to its immediate surroundings?

This football is located at my friends house.

What aspects make it specifically an interface to you?

The ball is the interface between people and the game. The ball is the communicator between those.

Who is the user of the interface?

The person who touches the ball.

Which 'system' or 'systems' are connected by the interface?

The system of the game and the ball itself.

How does the interface affect the user?

The user is affected by the touch of the ball, what happens after they touch it and the game the ball is part of.

How can the user interact with the interface?

The user can pick up, throw, kick the ball.

What are the material properties of the interface?

Leather, plastic, air.



TELEVISION

Where is it located, how is it relating to its immediate surroundings?

This tv is located in my brothers room.

What aspects make it specifically an interface to you?

A television is the interface between film that exist and someone being able to actually watch it.

Who is the user of the interface?

The person seeing the television.

Which 'system' or 'systems' are connected by the interface?

System of film and content with the tv. And the tv with the viewer.

How does the interface affect the user?

The user sees content. The user sees information of any kind.

How can the user interact with the interface?

The user sees the tv, sees information.

What are the material properties of the interface?

Glass, plastic and electronics.



SAW

Where is it located, how is it relating to its immediate surroundings?

It is located in my barn.

What aspects make it specifically an interface to you?

With this interface the user is able to saw wood.

Who is the user of the interface?

Everybody that needs to saw wood.

Which system or systems are connected by the interface?

The user is connected to the interface and the interface is connected to the wood.

How does the interface affect the user?

The user is able to saw wood or other things in a straight line.

How can the user interact with the interface?

By grabbing the handle and move the saw back and forth on the wood.

What are the material properties of the interface?

Metal, plastic.



INSECT HOTEL

Where is it located, how is it relating to its immediate surroundings?

It is located in my garden.

What aspects make it specifically an interface to you?

Because of this interface insects have a place to live and place to shelter.

Who is the user of the interface?

All insects that are going into the insect hotel.

Which system or systems are connected by the interface?

The interface is connected to the wall and to the insects.

How does the interface affect the user?

It gives the users a place to live, hide and make a nest.

How can the user interact with the interface?

By going into the insect hotel.

What are the material properties of the interface?

Wood.



LIGHTER

Where is it located, how is it relating to its immediate surroundings?

Located in your house, so you can use fire.

What aspects make it specifically an interface to you?

When you press the button it brings you fire and you can light something with that.

Who is the user of the interface?

Everybody that needs fire.

Which system or systems are connected by the interface?

The user and the interface connected to something you want to light up.

How does the interface affect the user?

This interface affects the user by using fire, for example to make a cozy vibe when you have candles on in your house.

How can the user interact with the interface?

Because of the button the user interacts with the interface.

What are the material properties of the interface?

Plastic.



COOLBLUE PACKAGE

Where is it located, how is it relating to its immediate surroundings?

This interface is brought to your house.

What aspects make it specifically an interface to you?

The fact that the user have to open it on a certain way.

Who is the user of the interface?

Everybody that gets this package, so people that order something on the internet in this case on coolblue.nl.

Which system or systems are connected by the interface?

The user is connected by this interface when he opens it. But also when he is waiting for the package to be delivered. But before it's delivered it's connected to the driver of the PostNL van.

How does the interface affect the user?

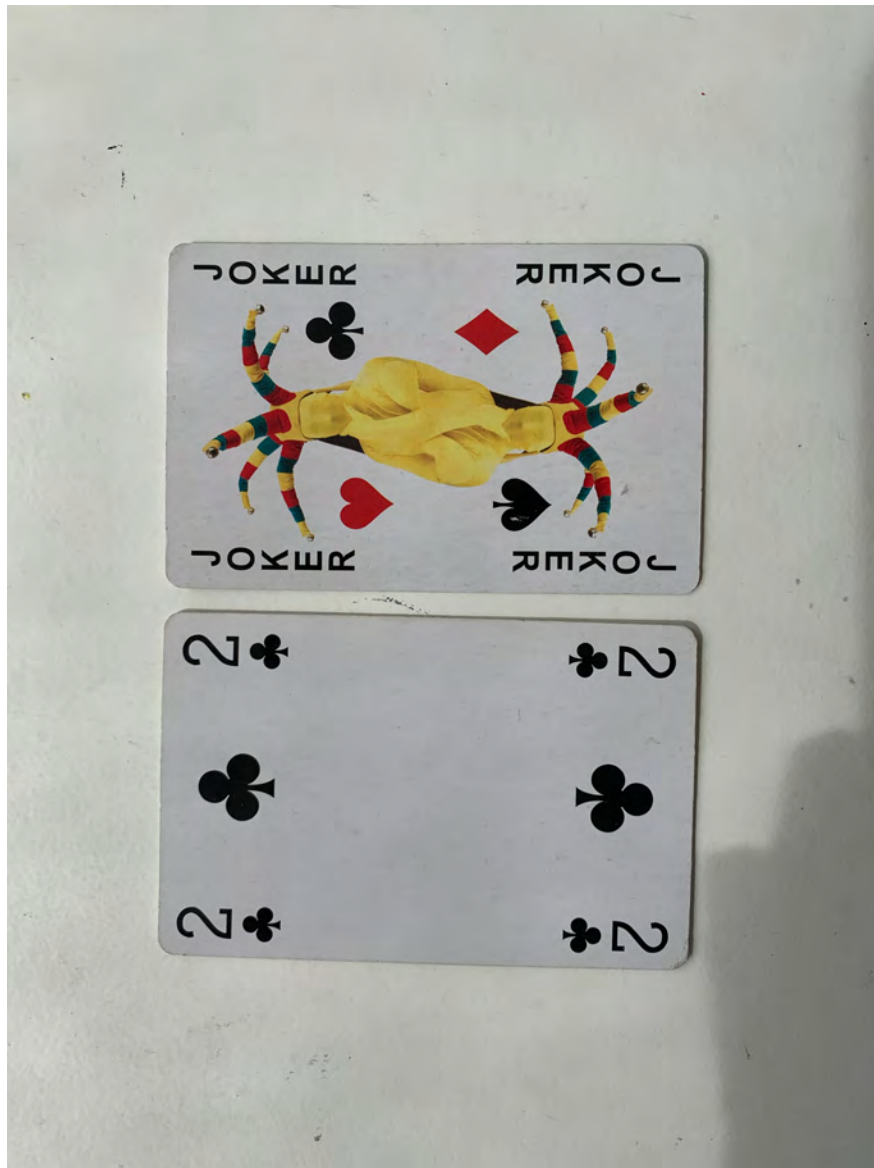
By acting on a certain way to open the package, when he opens it the user is excited.

How can the user interact with the interface?

By opening it and track it online.

What are the material properties of the interface?

Cardbord.



A CARDGAME

Where is it located, how is it relating to its immediate surroundings?

This card game is located at my home.

What aspects make it specifically an interface to you?

The signs communicate the status of the card which makes it possible to play a game with cards.

Who is the user of the interface?

The user is the person(s) holding the cards.

Which 'system' or 'systems' are connected by the interface?

System of the symbols displayed on the card, connected to the game and the rules of the people playing.

How does the interface affect the user?

The user is affected by getting the cards. The symbol and the game decide if the affect is good or bad. Cards can make a person win or lose a game.

How can the user interact with the interface?

The symbols interact status of the cards in the game.

What are the material properties of the interface?

Paper and ink.



TRASHCAN

Where is it located, how is it relating to its immediate surroundings?

It is located in my kitchen.

What aspects make it specifically an interface to you?

Because it opens when you want to throw something away.

Who is the user of the interface?

Everybody that don't want garbage laying around in their house.

Which system or systems are connected by the interface?

The foot of the user is connected by this interface.

How does the interface affect the user?

The user can throw his trash away.

How can the user interact with the interface?

By placing his foot on the pedel which opens the trashcan and then throw something in it.

What are the material properties of the interface?

Hard plastic.



THERMOSTAT

Where is it located, how is it relating to its immediate surroundings?

It is located in my living room.

What aspects make it specifically an interface to you?

Because the user can control the temperature in the room.

Who is the user of the interface?

Everybody that lives in a house with a thermostat.

Which system or systems are connected by the interface?

The user is connected to the interface and the interface is connected to the heating of the house.

How does the interface affect the user?

The user can control the heating on his own preference.

How can the user interact with the interface?

By rotating the button of the interface and in that way control the heating.

What are the material properties of the interface?

Plastic.



KEYS

Where is it located, how is it relating to its immediate surroundings?

It is located mostly in my pocket.

What aspects make it specifically an interface to you?

With these interfaces the user is able to open/lock doors.

Who is the user of the interface?

Everybody that needs to open or lock a door.

Which system or systems are connected by the interface?

The user is connected to the key and the key is connected to the keyhole that's fits the key.

How does the interface affect the user?

The user can go in his house or car and can also lock them.

How can the user interact with the interface?

By putting the key in the keyhole and twist the key.

What are the material properties of the interface?

Metal.



LIGHT SWITCH

Where is it located, how is it relating to its immediate surroundings?

This light switch is located in my kitchen at home. But a light switch is located in almost every modern building.

What aspects make it specifically an interface to you?

It is an interface because me touching the light switch turns on the light. The light switch is the interface between me and light.

Who is the user of the interface?

The user is the person who wants light in the kitchen. Or in general anyone who wants light uses a light switch.

Which 'system' or 'systems' are connected by the interface?

The systems that are connected is the electronics from the switch and the light bulb powered by it. By touching the light switch the light reacts.

How does the interface affect the user?

The user experiences light or darkness after using this interface.

How can the user interact with the interface?

The user can interact by touching and thinking which way to move the switch for turning the light on or off.

What are the material properties of the interface?

Hardened plastic.



MARKER (INK)

Where is it located, how is it relating to its immediate surroundings?

This marker is located in my room, or pencil case. It actually can be located anywhere in my house.

What aspects make it specifically an interface to you?

When you take the cap off and use the marker, the ink creates something. So me using the marker makes the ink create. The ink is the interface between a marker a person and creating. The ink makes creating possible.

Who is the user of the interface?

Anyone who owns a marker and want to create something.

Which 'system' or 'systems' are connected by the interface?

The systems that are connected are the ink coming out of the marker mechanism and a persons hand trying to create.

How does the interface affect the user?

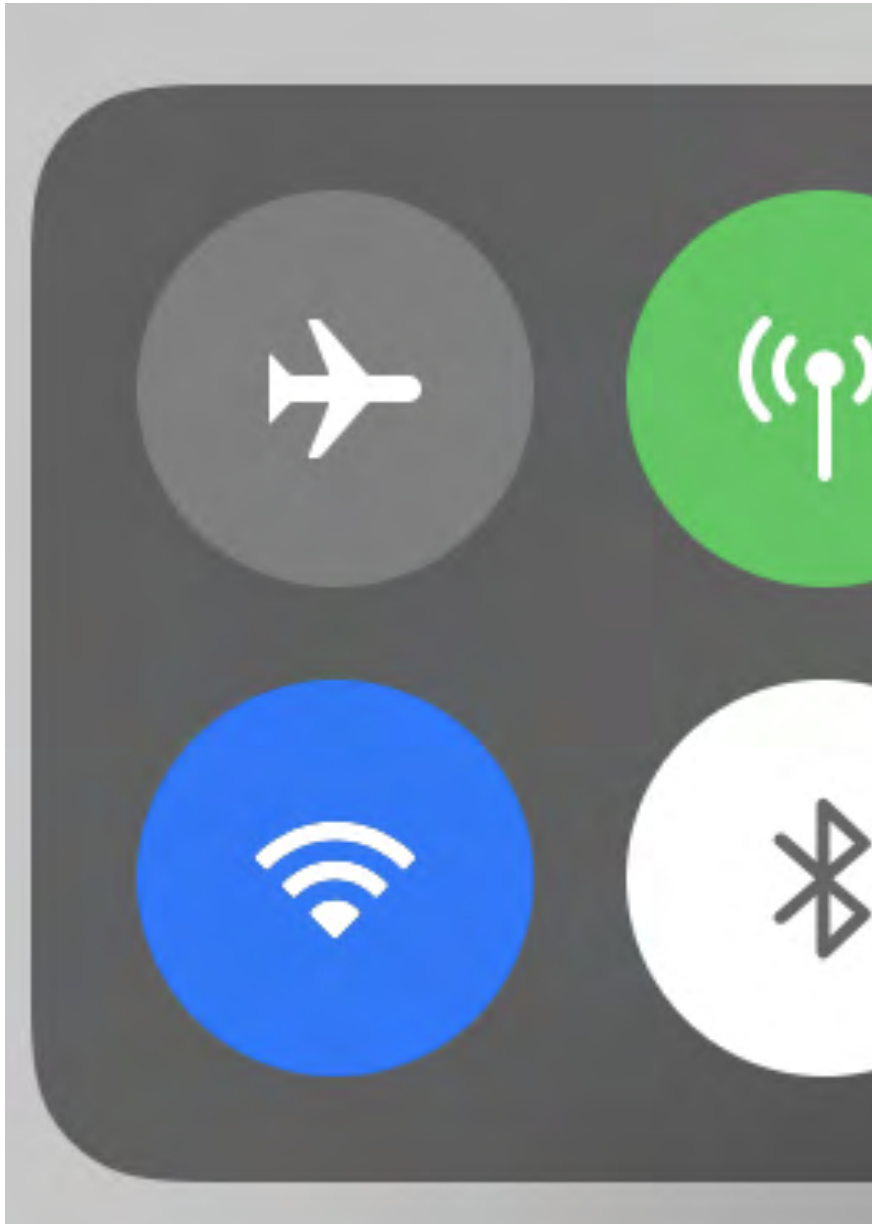
The user has to think about how to use the marker and experiences direct results.

How can the user interact with the interface?

The user holds the marker and moves it around. The user can write, draw or just make anything.

What are the material properties of the interface?

Ink, metal, plastic.



THE WIFI SIGN

Where is it located, how is it relating to its immediate surroundings?

This interface is located on my phone which I use everyday.

What aspects make it specifically an interface to you?

The three stripes with the dot always represent wifi. When you see these lines you immediately know what it means.

Who is the user of the interface?

The user of the wifi interface are a lot of people. Anyone with a device probably which are a lot of people.

Which 'system' or 'systems' are connected by the interface?

The systems that are connected are the three stripes with dot that we know as wifi with the system of this society and us knowing what it means.

How does the interface affect the user?

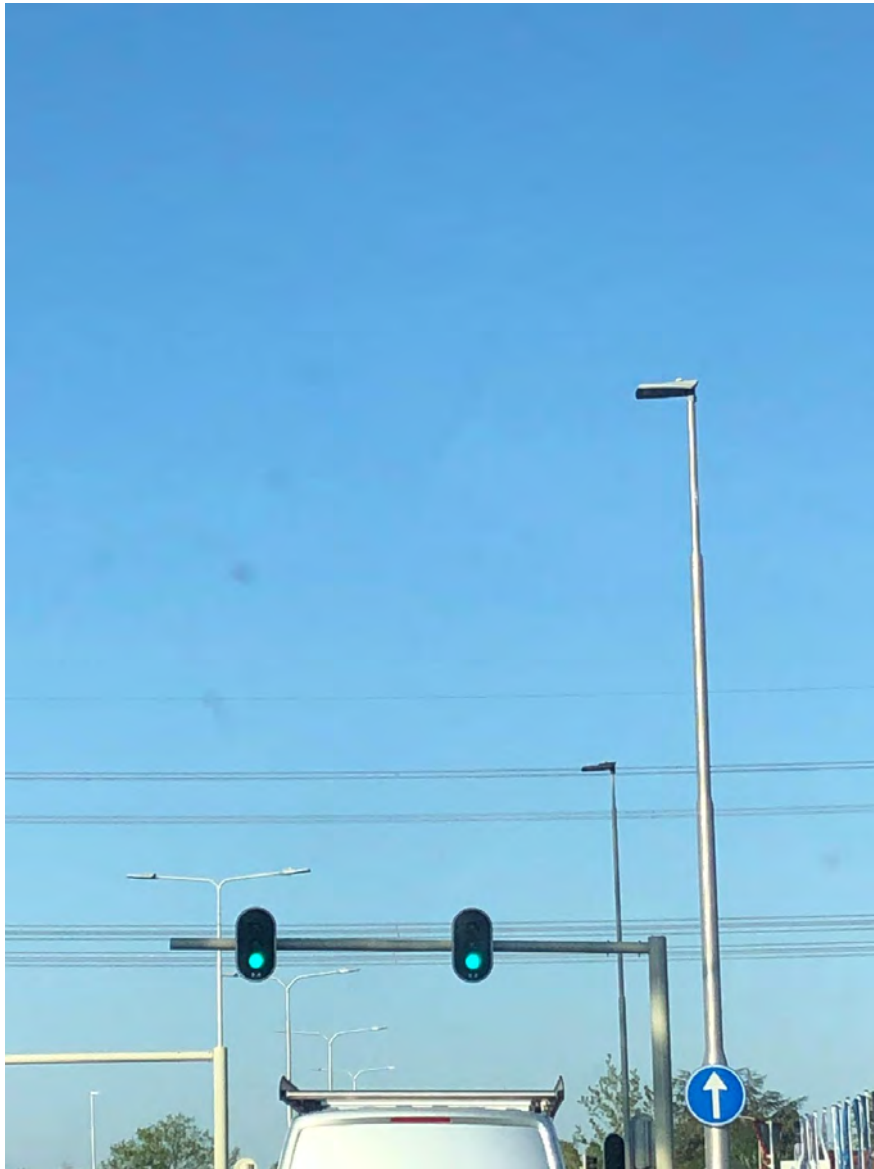
The user uses this interface to connect and use wifi.

How can the user interact with the interface?

The user interacts by for example filling in a password, using the wifi button on their phone or just using wifi in general.

What are the material properties of the interface?

It is not a material. It is more of an artificial something.



TRAFFIC LIGHT

Where is it located, how is it relating to its immediate surroundings?

This interface is located on almost every road I drive on. But this one specify is close to my house.

What aspects make it specifically an interface to you?

The fact that the colour of the light makes cars respond. We know that red means stop and green means go.

Who is the user of the interface?

The user of a traffic light is the person driving on the road. This can be by bike or car.

Which 'system' or 'systems' are connected by the interface?

The system of the colour of the traffic lights to traffic itself. The knowledge drivers have. The fact that we as a society gave these light that meaning.

How does the interface affect the user?

The user stops at a red light and goes at a green light.

How can the user interact with the interface?

The user sees the interface and reacts to it. Hits the break or hits the gas.

What are the material properties of the interface?

Metal, plastic, light.



PARKING LOT STRIPES

Where is it located, how is it relating to its immediate surroundings?

This parking spot is located outside my apartment.

What aspects make it specifically an interface to you?

The fact that's just these stripes suggest that you can't just park here. Just these stripes contain a message which the user understands.

Who is the user of the interface?

The user is a person driving a car.

Which 'system' or 'systems' are connected by the interface?

The system of stripes containing a message connected with the reader.

How does the interface affect the user?

It tells the user there a restrictions to parking there. It forbids or tells something.

How can the user interact with the interface?

The user reads it. After the user knows it can't or can park there.

What are the material properties of the interface?

Paint, bricks.



HEADPHONE

Where is it located, how is it relating to its immediate surroundings?

This headphone belongs to my brother.

What aspects make it specifically an interface to you?

The fact that these headphones transfer sound to your ears.

Who is the user of the interface?

The person who wears them.

Which 'system' or 'systems' are connected by the interface?

The system of sound and electronics to the person.

How does the interface affect the user?

The user hears the sound coming through. In that sense the user is affected by sound, depending on what kind of sound it is and what message it contains.

How can the user interact with the interface?

The user can listen and wear the interface.

What are the material properties of the interface?

Plastic and fabric.



POWER POINT

Where is it located, how is it relating to its immediate surroundings?

It is located in my living room.

What aspects make it specifically an interface to you?

With this interface you can charge or use devices.

Who is the user of the interface?

Every human that has electricity in their house.

Which system or systems are connected by the interface?

The device that is put in the powerpoint is connected to the interface and the interface is connected to the fuse box.

How does the interface affect the user?

The user can bring light in his house, charge devices or use devices. It is also a sign that there is electricity in a place to use.

How can the user interact with the interface?

By putting the power plug from the device into the power point.

What are the material properties of the interface?

Hard plastic and electrical wires.



CHAIR

Where is it located, how is it relating to its immediate surroundings?

This chair is located in my brothers room.

What aspects make it specifically an interface to you?

A chair is the interface between a person who wants to sit and the person sitting down.

Who is the user of the interface?

Any person who wants to sit down.

Which 'system' or 'systems' are connected by the interface?

The person who wants to sit and the chair that can give the person that.

How does the interface affect the user?

It gives the user comfort.

How can the user interact with the interface?

The user can sit on it.

What are the material properties of the interface?

Leather and wood. And something soft inside of it making it comfortable.



STOVE

Where is it located, how is it relating to its immediate surroundings?

This is the stove in my kitchen.

What aspects make it specifically an interface to you?

The stove is the interface between a person and cooking something. A stove makes it able to make meals and heat things up.

Who is the user of the interface?

The user is the person cooking.

Which 'system' or 'systems' are connected by the interface?

The system of a stove that provides heat, fire and food in a pan.

How does the interface affect the user?

The user is affected in a way that the user gets something warm after using the interface.

How can the user interact with the interface?

The user can cook it. The user experiences warm food.

What are the material properties of the interface?

Metal and fire.



CIGARETTES

Where is it located, how is it relating to its immediate surroundings?

It is located in my pocket or where I need it.

What aspects make it specifically an interface to you?

Because of this interface the user can smoke and get his daily nicotine.

Who is the user of the interface?

Everybody that is a smoker.

Which system or systems are connected by the interface?

The user is connected to the cigarette and the cigarette is connected to fire and the lungs. It also connected to the brain because it is addictive.

How does the interface affect the user?

The user can inhale smoke and mess up his lungs.

How can the user interact with the interface?

By putting a cigarette to his mouth, light it and then inhale.

What are the material properties of the interface?

Tobacco, paper.



CHARGER

Where is it located, how is it relating to its immediate surroundings?

It is located in my macbook sleeve.

What aspects make it specifically an interface to you?

With this interface you are able to charge your Macbook everywhere.

Who is the user of the interface?

Everybody that needs to charge his Macbook.

Which system or systems are connected by the interface?

The macbook is connected to the charger and the charger is connected to a power point.

How does the interface affect the user?

With this interface the user is still able to use his macbook even when it's out of power. Without this interface it is impossible to use your macbook when it is out of power.

How can the user interact with the interface?

By putting the charger into the macbook and into the powerpoint.

What are the material properties of the interface?

Hard plastic and electrical wires.



MAGNETS

Where is it located, how is it relating to its immediate surroundings?

It is located in my working room on a magnetic board.

What aspects make it specifically an interface to you?

With this interface you can stick important things to a magnetic board.

Who is the user of the interface?

Everybody that have a magnetic board.

Which system or systems are connected by the interface?

The interface is connected to the thing you want to hang up and to the magnetic board.

How does the interface affect the user?

The user is able to hang up important things.

How can the user interact with the interface?

By removing a magnet and put for example a picture under it.

What are the material properties of the interface?

Plastic, metal.



BROOM

Where is it located, how is it relating to its immediate surroundings?

It is located in my barn or garden.

What aspects make it specifically an interface to you?

Because of this interface the user can sweep the garden.

Who is the user of the interface?

Everybody that wants to sweep the garden.

Which system or systems are connected by the interface?

The user is connected to the broom and the broom is connected to the things you want to sweep and to the ground.

How does the interface affect the user?

With this interface the user is able to sweep and get a clear ground in his garden.

How can the user interact with the interface?

By grabbing the broom and slide it over the ground.

What are the material properties of the interface?

Wood, plastic.



LAPTOP

Where is it located, how is it relating to its immediate surroundings?

This can be located everywhere you want it to be and you can use it everywhere you want, it is now in my working room because I use it there

What aspects make it specifically an interface to you?

It makes it an interface to me because of all the buttons you control the laptop with and without them the laptop is useless

Who is the user of the interface?

Everybody that want or need to use it is the user.

Which system or systems are connected by the interface?

Humans are connected to the laptop and internet by this interface

How does the interface affect the user?

This interface affects the user on several ways because you can choose for yourself if you want to learn, think, see etc. from this interface.

How can the user interact with the interface?

The user interact with this interface by the keys and can also extend this by plugging in a mouse or drawing tablet.

What are the material properties of the interface?

The material properties of this interface are glass and aluminum on the outside and all sorts of technical material on the inside.



REMOTE

Where is it located, how is it relating to its immediate surroundings?

This remote is located in front of my television in my living room.

What aspects make it specifically an interface to you?

A remote is an interface to me because when you press the buttons the television will react to this. The remote connects the television to the user. The buttons have little descriptions. Those communicate what each button does. So the descriptions on the buttons are also an interface.

Who is the user of the interface?

The user of the interface is the person who wants to watch television and therefore touches the remote to make the television respond. The user who touches the buttons.

Which 'system' or 'systems' are connected by the interface?

The remote connects the user with the television. The descriptions on the buttons communicate the usage.

How does the interface affect the user?

It affects the user by experiencing change in the television. The television reacts to your actions. Also the user has to think about which buttons to press and what needs to happen.

How can the user interact with the interface?

The user can touch and read the interface.

What are the material properties of the interface?

Plastic and rubber. Hard material.



SHOELACES

Where is it located, how is it relating to its immediate surroundings?

Tying my shoelaces is part of my everyday routine.

What aspects make it specifically an interface to you?

When I tie my shoelaces, my shoes get wearable and tighter. So me doing my shoelaces communicate to my shoe and my feet. Shoelaces are the interface between me and me wearing my shoes. Without shoelaces these shoes would have been almost impossible to wear.

Who is the user of the interface?

Shoelaces are used by anyone with shoes that have them.

Which 'system' or 'systems' are connected by the interface?

The system that are connected in this interface are shoelaces with shoes and a person who ties them. The shoes with the user. The user with the shoelace.

How does the interface affect the user?

The user feels the affect on their feet and has to think about how to tie the shoelaces.

How can the user interact with the interface?

Knotting and tying.

What are the material properties of the interface?

Mostly fabric and a bit a plastic.



SEEDS OF A FLOWER

Where is it located, how is it relating to its immediate surroundings?

Flowers are located in my backyard.

What aspects make it specifically an interface to you?

A flower grows out of earth, then loses seeds to then let a new flower grow. The flower is the interface between earth and new life.

Who is the user of the interface?

The user of this interface is earth. The bees, wind, water and humans.

Which 'system' or 'systems' are connected by the interface?

The system of pollination. With the system of growth and life on earth. Also the bees getting the seeds and pollinating them somewhere else. The wind that makes the seeds move places. Water making the seeds grow.

How does the interface affect the user?

The user is affected by new growth and life. A new addition.

How can the user interact with the interface?

The user interacts through earth.

What are the material properties of the interface?

Flower, seeds, water and earth.



PARKING SIGN

Where is it located, how is it relating to its immediate surroundings?

This parking sign is located just outside my apartment. I always park my scooter next to it.

What aspects make it specifically an interface to you?

This sign communicates a message to the person driving or parking a car.

Who is the user of the interface?

The user is either any person who wants to park or drives by it, or the person who its meant for and has a disability.

Which 'system' or 'systems' are connected by the interface?

The systems connected are the P which stand for parking, the wheelchair that stands for a disability on blue board. Located next to a parking spot. These systems are connected through this.

How does the interface affect the user?

The user knows that they can't or can park here because of the message the sign shows.

How can the user interact with the interface?

The user reads or interprets the sign.

What are the material properties of the interface?

Metal.



A MIRROR

Where is it located, how is it relating to its immediate surroundings?

This mirror is located in my brothers room.

What aspects make it specifically an interface to you?

The fact that any person who looks into the mirror sees her/himself. The mirror is the interface between a person and a person seeing her/himself/

Who is the user of the interface?

The person looking into the mirror.

Which 'system' or 'systems' are connected by the interface?

The system of reflection a mirror gives and a person looking into it.

How does the interface affect the user?

The user can see itself, it affects the user in that sense that the user knows how they look and what they look like.

How can the user interact with the interface?

The user can look at it.

What are the material properties of the interface?

Glass.



MARKER

Where is it located, how is it relating to its immediate surroundings?

It is located in my working room.

What aspects make it specifically an interface to you?

With this interface the user is able to mark text that is important.

Who is the user of the interface?

Everybody that needs to mark text.

Which system or systems are connected by the interface?

The user is connected to the marker and the marker is connected to the paper with text on it.

How does the interface affect the user?

With this interface the user can mark important sentences to get an overview of a text.

How can the user interact with the interface?

By removing the cap and press the marker to any text you want to mark.

What are the material properties of the interface?

Plastic, inkt.



```
MacBook-Pro-van-Mark:tmp Eva$ echo hello
hello
MacBook-Pro-van-Mark:tmp Eva$ cd desktop
-bash: cd: desktop: No such file or directory
MacBook-Pro-van-Mark:tmp Eva$
MacBook-Pro-van-Mark:tmp Eva$ mkdir tmp
MacBook-Pro-van-Mark:tmp Eva$ tar -xf cli.tar -C tmp
tar: Error opening archive: Failed to open 'cli.tar'
MacBook-Pro-van-Mark:tmp Eva$ cd tmp
MacBook-Pro-van-Mark:tmp Eva$ ls
MacBook-Pro-van-Mark:tmp Eva$ arrow up
-bash: arrow: command not found
MacBook-Pro-van-Mark:tmp Eva$
MacBook-Pro-van-Mark:tmp Eva$ echo hello
hello
MacBook-Pro-van-Mark:tmp Eva$ say hello
MacBook-Pro-van-Mark:tmp Eva$ man say
MacBook-Pro-van-Mark:tmp Eva$ say -v zuzana hello, my name is zuzana
MacBook-Pro-van-Mark:tmp Eva$
```

COMMAND

Where is it located, how is it relating to its immediate surroundings?

This command interface is located on my computer. We got this assignment in Brigit's class.

What aspects make it specifically an interface to you?

This is an interface to me because when I type or ask something the device responds to it and acts.

Who is the user of the interface?

The user is someone who owns a laptop and knows about this feature.

Which 'system' or 'systems' are connected by the interface?

Connected are my keyboard and words to the laptop. Me typing anything communicates to my laptop.

How does the interface affect the user?

It makes the user think about what to type or in my case figuring out how it works. The user (me) experiences something new and is surprised by this new type of interface.

How can the user interact with the interface?

The user can type and ask and the laptop will respond and interact with this.

What are the material properties of the interface?

letters, storage on laptop.



SMINT PACKAGE

Where is it located, how is it relating to its immediate surroundings?

It is located in your pocket or everywhere you want.

What aspects make it specifically an interface to you?

With this interfaces you are able to bring smints with you when you go out.

Who is the user of the interface?

Everybody that wants a fresh breath or a nice taste.

Which system or systems are connected by the interface?

The user is connected to the interface and the interface is connected to the smints that are inside.

How does the interface affect the user?

With this interface the user will get a fresh breath because he can bring smints with him when he goes out.

How can the user interact with the interface?

By opening the interface and take a smint out.

What are the material properties of the interface?

Metal.



WATERING CAN

Where is it located, how is it relating to its immediate surroundings?

It is located in my garden.

What aspects make it specifically an interface to you?

Because of this interface you can water plants in your garden.

Who is the user of the interface?

Everybody that's wants to water plants.

Which system or systems are connected by the interface?

The user is connected to the interface and the interface is connected to water and plants.

How does the interface affect the user?

The user is able to keep his plants alive.

How can the user interact with the interface?

By grabbing the handle of the watering can, fill it with water and then use it on the plants that are in need of water.

What are the material properties of the interface?

Plastic.



PERFUME

Where is it located, how is it relating to its immediate surroundings?

It is located in my bathroom.

What aspects make it specifically an interface to you?

Because you can spray perfume with it.

Who is the user of the interface?

Every men that wants to smell nice.

Which system or systems are connected by the interface?

The user is connected to the interface and the interface is connected to the body part where you want to spray the perfume on.

How does the interface affect the user?

The interface effects the user by smelling nice.

How can the user interact with the interface?

The user can interact with the interface by pressing the top.

What are the material properties of the interface?

Metal.



COFFEE MACHINE

Where is it located, how is it relating to its immediate surroundings?

This is located in the kitchen because this is the place where you make your coffee.

What aspects make it specifically an interface to you?

It makes it an interface to me because by connecting with this machine you get your coffee made, for this you choose one of the buttons on top.

Who is the user of the interface?

Everybody that wants to drink coffee

Which system or systems are connected by the interface?

The user is connected to the coffee machine by this interface

How does the interface affect the user?

This interface affects the user by enjoying a cup of coffee, it makes the user feel good and it gives the user a moment of relaxing

How can the user interact with the interface?

The user interact with this interface by the buttons.

What are the material properties of the interface?

The material properties of this interface are mostly plastics.



SICCORS

Where is it located, how is it relating to its immediate surroundings?

It is located in a draw in my living room.

What aspects make it specifically an interface to you?

With this interface the user can cut something.

Who is the user of the interface?

Everybody that needs to cut something.

Which system or systems are connected by the interface?

The user is connected to the interface and the interface is connected to the paper that needs to be cut.

How does the interface affect the user?

The user is able to cut something.

How can the user interact with the interface?

By putting fingers in the two holes en press them together.

What are the material properties of the interface?

Metal, plastic.



SOCCER FIELD LINE

Where is it located, how is it relating to its immediate surroundings?

This line is located at a soccer field close to home.

What aspects make it specifically an interface to you?

These lines are an interface to me because they set boundaries and influences the people using the field. The lines communicate rules. The lines on a field tell the user how to use the field.

Who is the user of the interface?

The user of this interface are people playing soccer or another game. It could be anyone entering the (a) field.

Which 'system' or 'systems' are connected by the interface?

The systems that are connected are systematical lines used on fields and people knowing the system that these lines are. People know how to use them because they are taught so.

How does the interface affect the user?

It affects the user by setting boundaries or making rules for certain games. The user experiences some kind of boundary that is set for them.

How can the user interact with the interface?

The user sees the lines and acts upon those lines.

What are the material properties of the interface?

Paint. Grass.



RULER

Where is it located, how is it relating to its immediate surroundings?

It is located in my working room because I use it there.

What aspects make it specifically an interface to you?

It helps the user to measure something

Who is the user of the interface?

Everybody that wants to measure something that is no longer than 30 cm.

Which system or systems are connected by the interface?

The user is connected to the interface and the interface is connected to thing you want to measure.

How does the interface affect the user?

The user know the size of the thing that is measured.

How can the user interact with the interface?

By picking up the ruler and lay it next to the thing that you want to know the size of.

What are the material properties of the interface?

Metal

Toen ik klein was, kreeg ik een stuntfietst van mijn broer, een BMX. Ik noemde die fiets Fido Dido.

Fido Dido was een geinig stripfiguurtje met spriethaar. Ik vond hem vet cool. Mijn Fido Dido werd bij het zwembad gejat, en mijn vader kwam erheen met zijn hemd open en zijn mouwen opgestroopt. Hij is van het type van 'blijf van mijn kinderen af'. Niemand komt aan hun spellen. Maar zelfs zo'n potige kerel als hij kon er niks aan doen. Fido Dido was weg en ik was wanhopig.

Daarna begon ik fietsen te jatten. Ik brak het slot open. Daar werd ik heel goed in. Gewoon 'tjak, tjak' en het karretje was van mij. Ik was fietsendief. Dat was mijn eerste bezigheid. Het was vrij onschuldig. Maar soms ontspoorde het. Op een keer trok ik zwarte kleren aan en knipte in het donker als een echte Rambo met een enorme betonschaar een legerfiets open en ja, dat was echt een gaaf karretje. Ik was er dol op. Maar eindelijk gezegd ging het me meer om de kick dan om de fiets. Ik vond het te gek om in het donker rond te sluipen en eieren tegen ruiten te gooien en dat soort flauwekul, en ik werd maar zelden gepakt.

Zoals een keer bij een pijnlijk akkefietje in warenhuis Wessels in Jigero. Maar dat was ook terecht, eindelijk gezegd. Een vriend en ik hadden midden in de zomer een winterjack aangehouden, volkomen geschikt, en daaronder hadden we vier pingpongbatjes verstoppt en ander troep die we hadden gejat. 'Zeg, hoe hadden jullie gedacht daarvoor te betalen?' vroeg de bewaker toen we werden gepakt. Ik haalde zes muntes van tien ore uit mijn zak: 'Hiermee.' Maar die ven had geen gevoel voor humor.

wat professioneler aan te pakken. Ik denk dat ik op den duur best een handige donder was.

Ik was een klein kereltje, weet je. Ik had een grote neus, ik eliste en ik kreeg logopedie. Er kwam een vrouw bij me op school, die leerde me de zeggens. Dat vond ik vernederend en ik denk dat ik me wilde wreken. Bovendien had ik geen rust in mijn lijf. Ik kon geen seconde stilzitten en ik holde de hele tijd rond. Het was net of me niks kon overkomen als ik maar snel genoeg rende. We woonden in Rosengård bij Malmö, waar het wemelde van de Somaliërs, Turken, Joego's, Polen en naffers, maar er woonden geen autochtone Zweden. Wij jongens deden allemaal stoer. We hadden een kort lonje en het was thuis ook niet makkelijk, hoor.

We woonden toen vierhoog aan de Cronmansväg in Törnösgränd en we deden niet aan knuffelen en dat soort dingen. Niemand vroeg: 'Hoe ging het vandaag, knulletje van me?' of iets dergelijks. Geen volwassen hulpje met je huiswerk of vroeg of je ergens mee zat. Je moest je zelf maar zien te redden en je hoefde niet te zeuren als iemand rot tegen je had gedaan. Je moest maar op je tanden bijten, het was chaos en ruzie, en ook wel eens een pak slaag. Maar natuurlijk hoopte je soms ook op een beetje sympathie. Op een dag viel ik op het kinderdagverblijf van een dak. Ik had een enorm blauw oog en rende huilend naar huis. Ik verwachtte een aai over mijn bol of toch op z'n minst een beetje troost. Ik kreeg een paar flinke draaien om mijn oren. 'Wat moest je ook op dat dak?'

Niks geen: 'Arme, lieve Zlatan.' Wel: 'Stomme idioot dat je op dat dak klimt, een klap kun je krijgen.' Ik was helemaal geschokt, trok me in mezelf terug en maakte dat ik wegkwam. Mijn moeder had geen tijd om me te troosten, toen. Ze was schoonmaakster en ze werkte hard om voor ons te zorgen, ze was echt een vechter. Maar veel meer kon ze ook niet. Ze had het moeilijk gehad en wij waren allemaal vreselijk lastig. Er werd thuis niet bepaald keurig Zweeds gepraat, geen: 'Schat, wil je me alsblijft de biter aangeven,' maar eerder: 'Haal de melk eens, idioot!' Deuren sloegen dicht en mama huilde. Ze huilde vaak. Ik hou van haar. Ze heeft een zwaar leven gehad. Ze maakte zo'n veertien uur per dag schoon en af en toe gingen wij mee, maakten prullenbakken leeg

BOOK

Where is it located, how is it relating to its immediate surroundings?

This book is located in my room. I haven't read it yet but it is there.

What aspects make it specifically an interface to you?

Me reading the words on the pages makes me understand something. The words communicated to me. It is a non-fiction story about the mafia. So this book can teach me information about the mafia and I can learn from that.

Who is the user of the interface?

The person who reads the book.

Which 'system' or 'systems' are connected by the interface?

The reader and the words. The words and the story it contains. The system of telling a story and the user understanding. Writing something down and the user learning something from that.

How does the interface affect the user?

The user reads the story, it could make them think, it could bring them an emotion.

How can the user interact with the interface?

The user holds the book and reads the words.

What are the material properties of the interface?

Paper and ink.



MIRROR

Where is it located, how is it relating to its immediate surroundings?

Usually this mirror is located either on my window sill either on the table. When I want to use it I put it on the table.

What aspects make it specifically an interface to you?

It makes an interface to me because mirror directly interacts with the user by showing the reflection of the user.

Who is the user of the interface?

Everybody who wants or needs to use it.

Which system or systems are connected to the interface?

Humans are connected to this interface. Without mirrors we would not be able to see how we look.

How does the interface affect the user?

Interface allows us to see how our body, face looks and based on that we can make decisions about which clothes to wear today, choose the outfit that fits the best, look in what condition our skin is or do makeup.

How can the user interact with the interface?

User can interact with the interface simply just by looking at it.

What are the material properties of the interface?

Material properties are glass and metal.



CANDLE

Where is it located, how is it relating to its immediate surroundings?

This candle is located on the shelf. I like to light it in the evenings.

What aspects make it specifically an interface to you?

It makes an interface to me because by using it, it brings warmth and coziness to my room.

Who is the user of the interface?

Every individual who likes candles.

Which system or systems are connected to the interface?

Humans are connected by this interface. User needs to light a candle with lighter or matches. Without human interaction the candle is useless.

How does the interface affect the user?

Interface affects the user by ability to feel warmth and comfort in evenings. It helps to relax and calm down. Also the smell is very pleasing.

How can the user interact with the interface?

User interacts with the interface by using a lighter or matches.

What are the material properties of the interface?

Material properties are glass and wax.



PILLOW

Where is it located, how is it relating to its immediate surroundings?

It is located in my sister's living room. It is related to its immediate surroundings by functioning as an addition to interior.

What aspects make it specifically an interface to you?

It makes an interface to me because you can lay your head on it and feel the comfort.

Who is the user of the interface?

Everyone who wants or needs to use it.

Which system or systems are connected to the interface?

Humans are connected to this interface. Sometimes pets can also connect to the interface if it is allowed by the owner.

How does the interface affect the user?

This interface is an integral part of sleep. Without it user won't feel comfortable at night. Also the design of pillow makes you think about the horses.

How can the user interact with the interface?

The user can interact with the interface by resting head on it or by making it as a part of interior.

What are the material properties of the interface?

Material properties of the interface is textile on the outside and down on the inside.



ELEPHANT SCULPTURE

Where is it located, how is it relating to its immediate surroundings?

It is located on cupboard next to TV. It is related to its immediate surroundings by functioning as an addition to interior.

What aspects make it specifically an interface to you?

It makes an interface to me because when I look on it

Who is the user of the interface?

The user of the interface is the owner who bought it.

Which system or systems are connected to the interface?

Humans are connected to this interface.

How does the interface affect the user?

The interface affect the user by giving a feeling of pleasure and aesthetic when you look at it.

How can the user interact with the interface?

User can interact with the interface by looking on it, placing it in different places and making it as a part of decor.

What are the material properties of the interface?

Material properties of the interface is glass.



BOWL WITH STRAWBERRIES

Where is it located, how is it relating to its immediate surroundings?

Right now it is located on the table in the living room, because I am eating strawberries at the moment. The bowl has a minimalistic design. That way it nicely fits to the wood table.

What aspects make it specifically an interface to you?

It makes an interface to me because I can touch it, eat it and smell it.

Who is the user of the interface?

Everybody who likes strawberries.

Which system or systems are connected to the interface?

Humans are connected by this interface. Gardeners plant strawberries and take care of them. When it's ready for consumption it is getting delivered to stores.

How does the interface affect the user?

Interface affects the user by letting to eat it and taste the sweetness.

How can the user interact with the interface?

User interacts with the interface by eating it.

What are the material properties of the interface?



CHOCOMEL

Where is it located, how is it relating to its immediate surroundings?

This milk usually is everywhere with me, but for now it is located in the kitchen.

What aspects make it specifically an interface to you?

It makes an interface to me because I can drink it and also the design of the package really catches my eye.

Who is the user of the interface?

Every individual who enjoys to drink chocolate milk.

Which system or systems are connected to the interface?

Humans are connected by this interface.

How does the interface affect the user?

This interface affects the user by giving an ability to feel the taste of it.

How can the user interact with the interface?

User interacts with this interface by drinking it.

What are the material properties of the interface?

Material properties of this interface are cardboard and plastic.



SUITCASE

Where is it located, how is it relating to its immediate surroundings?

At the moment this suitcase is located in the room at my sisters's house. Usually it would be somewhere else, but I am leaving back to Latvia soon, that's why I placed it there.

What aspects make it specifically an interface to you?

It makes an interface to me because suitcase is an integral part of travelling. An object where I can put all my clothes in.

Who is the user of the interface?

Everybody who needs it for traveling purpose.

Which system or systems are connected to the interface?

Every individual who is travelling are connected to this interface.

How does the interface affect the user?

Interface affects the user by giving the possibility to have a place where all the clothes and other necessary things can be located during vacation,trip.

How can the user interact with the interface?

User interacts with this interface by placing personal belongings in it.

What are the material properties of the interface?

Material properties of the interface are ballistic nylon,



ELECTRIC CAR CHARGING POINT SIGN

Where is it located, how is it relating to its immediate surroundings?

It is located on the road in Breda.

What aspects make it specifically an interface to you?

It makes an interface to me because this sign communicates a message to the owners of electric cars.

Who is the user of the interface?

Everybody who has an electric car.

Which system or systems are connected to the interface?

Sign P and charger sign mean that person who has an electric car can park his car there and leave for charging.

How does the interface affect the user?

Interface affects the user by allowing charge his car at this place.

How can the user interact with the interface?

User interacts with the interface by reading it.

What are the material properties of the interface?

Material properties are stone.



FILM CAMERA ZENIT E

Where is it located, how is it relating to its immediate surroundings?

This camera can be located anywhere because usually it always with me and I place it everywhere.

What aspects make it specifically an interface to you?

It makes an interface to me because it is my favourite film camera and I can capture the most beautiful moments with it.

Who is the user of the interface?

The user of especially this camera is only me.

Which system or systems are connected to the interface?

The user is connected to this interface. The interface includes three basic components - lens, film and mechanical element (the camera body itself).

How does the interface affect the user?

It allows to take photographs on film.

How can the user interact with the interface?

User can interact with this interface by putting in a film roll and adjusting the settings such as aperture and exposure. After that camera is ready to take a shot.

What are the material properties of the interface?

Material properties of the interface is glass, polycarbonate.



KETTLE

Where is it located, how is it relating to its immediate surroundings?

It is located in the kitchen.

What aspects make it specifically an interface to you?

It makes an interface to me because with its help I can make me tea.

Who is the user of the interface?

Everybody who needs to use it.

Which system or systems are connected to the interface?

Humans are connected by this interface and the interface is connected to the water and electricity, otherwise it is useless.

How does the interface affect the user?

It allows to enjoy a cup of tea.

How can the user interact with the interface?

By pressing the button user can make water hot and make a tea.

What are the material properties of the interface?

Material properties of this interface are mostly plastics.



HAIRDRYER

Where is it located, how is it relating to its immediate surroundings?

It is usually located in the bathroom, but for now I placed it there because I am going to take it with me to Latvia.

What aspects make it specifically an interface to you?

It makes an interface to me because I can dry my hair with it.

Who is the user of the interface?

Everybody who needs to get their hair dry.

Which systems or systems are connected to the interface?

Humans are connected to this interface and the interface is connected to our hair because it blows hot air out of it and thus makes the hair dry faster. And also it is connected to electricity, otherwise it can't work.

How does the interface affect the user?

It helps to get your hair dry after washing.

How can the user interact with the interface?

User can interact with the interface by pressing the buttons to turn it on.

What are the material properties of the interface?

Material properties are mostly plastics.



LIP BALM

Where is it located, how is it relating to its immediate surroundings?

It is usually located in the pocket of my jacket, because I use it really often.

What aspects make it specifically an interface to you?

It makes an interface to me because when my lips getting dry it helps me to keep them moisturised.

Who is the user of the interface?

Everybody whose lips getting dry.

Which system or systems are connected to the interface?

Humans are connected to this interface.

How does the interface affect the user?

It allows to keep your lips moisturised and it also has a nice smell and taste.

How can the user interact with the interface?

Simply just by applying it on your lips.

What are the material properties of the interface?

Material properties are plactic and wax.



WATERING CAN

Where is it located, how is it relating to its immediate surroundings?

It is located in the shed.

What aspects make it specifically an interface to you?

It makes an interface to me because I can water plants with it.

Who is the user of the interface?

Everyone who wants to water plants.

Which system or systems are connected to the interface?

Users are connected by this interface and the interface is connected to water and water is connected to plants.

How does the interface affect the user?

It allows to water your plants.

How can the user interact with the interface?

User can interact with the interface by pouring the water in it.

What are the material properties of the interface?

Material properties are plastics.



TOTE BAG

Where is it located, how is it relating to its immediate surroundings?

Right now it is located on the ground, but usually it always with me.

What aspects make it specifically an interface to you?

It makes an interface to me because I can put my stuff in there.

Who is the user of the interface?

Everybody who needs it.

Which system or systems are connected to the interface?

Humans are connected to this interface.

How does the interface affect the user?

It allows to have a place where to put your everyday stuff.

How can the user interact with the interface?

User can interact with the interface simply just by putting in their stuff. Also the design of the bag is nice and eye catching.

What are the material properties of the interface?

Material properties of the interface are textile.



LIGHT SWITCH

Where is it located, how is it relating to its immediate surroundings?

It is located on the wall in the living room.

What aspects make it specifically an interface to you?

It makes an interface to me because by pressing on it you can switch on or turn off the light in the room.

Who is the user of the interface?

Everyone who wants to turn on/off the light.

Which system or systems are connected to the interface?

Humans are connected by this interface and the interface is connected to the wall and electricity.

How does the interface affect the user?

By turning it on or turning off user can regulate the light in the room.

How can the user interact with the interface?

User interacts with the interface by pressing on it.

What are the material properties of the interface?

Material properties are plastics.



MATCHES

Where is it located, how is it relating to its immediate surroundings?

It is located in the kitchen on cupboard.

What aspects make it specifically an interface to you?

It makes an interface to me because with it help, for example I can light up a candle.

Who is the user of the interface?

Everybody who needs to use it.

Which system or systems are connected to the interface?

Users are connected by this interface and the interface is connected to the object which needs to be lightened up.

How does the interface affect the user?

It affects the user by giving a possibility to get and use a fire.

How can the user interact with the interface?

User interacts with the interface by taking out one match and with the fast movement striking the match against a suitable surface.

What are the material properties of the interface?

Cardboard.



DOG LEASH

Where is it located, how is it relating to its immediate surroundings?

It is located on the cupboard next to the main door.

What aspects make it specifically an interface to you?

It makes an interface to me because I can walk with the dog by using it.

Who is the user of the interface?

Everybody who wants to go for a walk with the dog.

Which system or systems are connected to the interface?

Humans and dogs are connected to this interface.

How does the interface affect the user?

It allows to walk with the dog without worrying about that dog can run away.

How can the user interact with the interface?

User interacts with the interface by attaching a leash to the dog's collar.

What are the material properties of the interface?

Material properties are mostly plastics.



SCALES

Where is it located, how is it relating to its immediate surroundings?

It is located on the ground in the bathroom.

What aspects make it specifically an interface to you?

It makes an interface to me because I can see how much I weight by using it.

Who is the user of the interface?

Everybody who needs it.

Which system or systems are connected to the interface?

Humans are connected to this interface.

How does the interface affect the user?

It allows to found out how much you weight.

How can the user interact with the interface?

User interacts with the interface by stepping on it and staying on it for few seconds.

What are the material properties of the interface?

Material properties are glass.



POSTBOX

Where is it located, how is it relating to its immediate surroundings?

It is located in someone's yard. I liked how it looks so I took a picture of it.

What aspects make it specifically an interface to you?

It makes an interface to me because you receive mail from it.

Who is the user of the interface?

The owner of the house.

Which system or systems are connected to the interface?

Humans are connected by this interface.

How does the interface affect the user?

It allows to have a place where postman can put mail in.

How can the user interact with the interface?

User interacts with the interface by taking the mail out of it.

What are the material properties of the interface?

Material properties are stone or metal.



SIGN

Where is it located, how is it relating to its immediate surroundings?

This sign is located somewhere on the street in Breda.

What aspects make it specifically an interface to you?

It makes an interface to me because this sign communicates with the drivers. It says that there is school nearby and kids might be on the road so you have to drive slowly.

Who is the user of the interface?

Everyone who is driving on this road.

Which system or systems are connected to the interface?

Drivers are connected by this interface.

How does the interface affect the user?

The interface is warning drivers.

How can the user interact with the interface?

User reads the interface.

What are the material properties of the interface?

Material properties are metal.



BENCH

Where is it located, how is it relating to its immediate surroundings?

It is located next to bus stop in Breda.

What aspects make it specifically an interface to you?

It makes an interface to me because I can sit on it while waiting for the bus.

Who is the user of the interface?

Everybody who is waiting for the bus or just want to rest for a little bit.

Which systems or systems are connected to the interface?

Humans are connected to this interface.

How does the interface affect the user?

It allows to sit and not stand all the time if, for example you came to the bus stop early and have to wait for the bus quiet a long time.

How can the user interact with the interface?

User interacts with the interface by sitting on it, but also by looking on it because bench itself looks like piece of art.

What are the material properties of the interface?

Material properties are colourful stones.



FLOWERS VASE

Where is it located, how is it relating to its immediate surroundings?

It is located on the window sill in the living room.

What aspects make it specifically an interface to you?

It makes an interface to me because I can put flowers in it and thus bring some freshness to the room.

Who is the user of the interface?

Everybody who likes flowers in their home.

Which systems or systems are connected to the interface?

Humans and plants are connected to this interface

How does the interface affect the user?

It allows to have a place where to put a little piece of nature.

How can the user interact with the interface?

User interacts with the interface by putting flowers in the vase.

What are the material properties of the interface?

Ceramics.



LAPTOP CHARGER

Where is it located, how is it relating to its immediate surroundings?

It is now located on my bed, because I am going to use it later.

What aspects make it specifically an interface to you?

It makes an interface to me, because I can charge my laptop with it.

Who is the user of the interface?

Everybody who needs to use it for charging their laptop.

Which systems or systems are connected to the interface?

Humans are connected to this interface and the interface is connected to electricity.

How does the interface affect the user?

It allows to charge laptop when its battery ran out.

How can the user interact with the interface?

User interacts with the interface by plugging the charger in laptop.

What are the material properties of the interface?

Material properties are mostly plastics.



MICROWAVE

Where is it located, how is it relating to its immediate surroundings?

It is located in the kitchen.

What aspects make it specifically an interface to you?

It makes an interface to me because I can warm my food by using it.

Who is the user of the interface?

Everybody who wants to make their food warm.

Which system or systems are connected to the interface?

Humans are connected by this interface and the interface is connected to the electricity.

How does the interface affect the user?

It allows to quickly warm up the cold food.

How can the user interact with the interface?

User interacts with the interface by putting in a plate with food and pressing the buttons.

What are the material properties of the interface?

Material properties are glass and metal.



THRASHCAN

Where is it located, how is it relating to its immediate surroundings?

It is located in the backyard of my sister's house.

What aspects make it specifically an interface to you?

It makes an interface to me because I can throw all the waste in there.

Who is the user of the interface?

Everybody who wants to get rid of the waste.

Which systems or systems are connected to the interface?

Humans are connected by this interface and the interface is connected to the waste collecting companies.

How does the interface affect the user?

It allows to have a place where the user can throw his trash away.

How can the user interact with the interface?

User interacts with the interface by opening the cap and throwing in the trash.

What are the material properties of the interface?

Material properties are plastics.



HOT GLUE

Where is it located, how is it relating to its immediate surroundings?

It is located in the corner of the window sill.

What aspects make it specifically an interface to you?

It makes an interface to me because I can use it for making decorations.

Who is the user of the interface?

Everybody who needs to use it.

Which system or systems are connected to the interface?

Humans are connected by this interface

How does the interface affect the user?

It allows to glue something together.

How can the user interact with the interface?

User interacts with the interface by pressing the orange thing and applying hot glue in areas where you need it.

What are the material properties of the interface?

Material properties are mostly plastics.



SANITIZER

Where is it located, how is it relating to its immediate surroundings?

It is usually located in my bag.

What aspects make it specifically an interface to you?

It makes an interface to me because I can disinfect my hands with it.

Who is the user of the interface?

Everybody who needs it when there is no possibility to wash hands.

Which system or systems are connected to the interface?

Humans are connected by this interface.

How does the interface affect the user?

It makes your hands clean without using water.

How can the user interact with the interface?

User interacts with the interface by applying it on your hands.

What are the material properties of the interface?

Material properties are plastic and the liquid inside.



MONEYBOX

Where is it located, how is it relating to its immediate surroundings?

It is located next to the fireplace in the living room.

What aspects make it specifically an interface to you?

It makes an interface to me because I can collect money that way.

Who is the user of the interface?

Everybody who wants to collect money.

Which system or systems are connected to the interface?

Humans are connected by this interface and the interface is connected to the money.

How does the interface affect the user?

It allows to have a place where put money for collecting.

How can the user interact with the interface?

User interacts with the interface by putting money in.

What are the material properties of the interface?

Material properties are porcelain.



TAPE-MEASURE

Where is it located, how is it relating to its immediate surroundings?

It is located on the table in the living room.

What aspects make it specifically an interface to you?

It makes an interface to me because I can measure length of something.

Who is the user of the interface?

Everybody who needs to measure something that is no longer than 3m.

Which system or systems are connected to the interface?

Humans are connected by this interface and the interface is connected with the object you want to measure.

How does the interface affect the user?

It allows to know the size of the thing that is measured.

How can the user interact with the interface?

User interacts with the interface by taking out the flexible metal tape and measuring the object.

What are the material properties of the interface?

Material properties are plastics and metal.



JUICE SQUEEZER

Where is it located, how is it relating to its immediate surroundings?

It is located in the kitchen.

What aspects make it specifically an interface to you?

It makes an interface to me because I can make fresh juice with it.

Who is the user of the interface?

Everybody who want to drink freshly squeezed juice.

Which system or systems are connected to the interface?

Humans are connected by this interface.

How does the interface affect the user?

Freshly squeezed juice is good for health. It gives a lot of vitamins and really has the best taste.

How can the user interact with the interface?

User interacts with the interface by putting, for example oranges in then closing the cap and placing hands on top and start pressing.

What are the material properties of the interface?

Material properties are plastics.



SIGN FOR DOGS

Where is it located, how is it relating to its immediate surroundings?

It is located on a field in Breda.

What aspects make it specifically an interface to you?

It makes an interface to me because I can read from this sign that this area is allowed for dogs and thus can take my dog there.

Who is the user of the interface?

Everybody who is taking out for the walk their dogs.

Which system or system are connected to the interface?

Dogs owners are connected by this interface.

How does the interface affect the user?

It allows to have a place where you can take out your dog.

How can the user interact with the interface?

User interacts with the interface by reading it.

What are the material properties of the interface?

Material properties are wood and metal.



MELON ICE CREAM

Where is it located, how is it relating to its immediate surroundings?

It is located in the cafe in Breda.

What aspects make it specifically an interface to you?

It makes an interface to me because I can buy it and eat it.

Who is the user of the interface?

Everybody who likes ice cream with melon taste.

Which system or systems are connected to the interface?

Humans are connected by this interface.

How does the interface affect the user?

It is nice to eat it on a hot summer day. It gives a feeling of freshness, because it's cold.

How can the user interact with the interface?

User interacts with the interface by eating it.

What are the material properties of the interface?

It is made from fat, milk, gelatine, egg and flavouring.



GLUE PADS

Where is it located, how is it relating to its immediate surroundings?

It is located in my room in a box.

What aspects make it specifically an interface to you?

It makes an interface to me because I can glue my posters on the wall with it.

Who is the user of the interface?

Everybody who needs it.

Which system or systems are connected to the interface?

Humans are connected to this interface and the interface is connected to the surfaces it is stucked to.

How does the interface affect the user?

It allows to stick something on any surface, for example on the wall, desk, paper and etc.

How can the user interact with the interface?

User interacts with the interface by taking in out from the package and using it for their needs.

What are the material properties of the interface?

Material properties are glue, paper, rubber.